

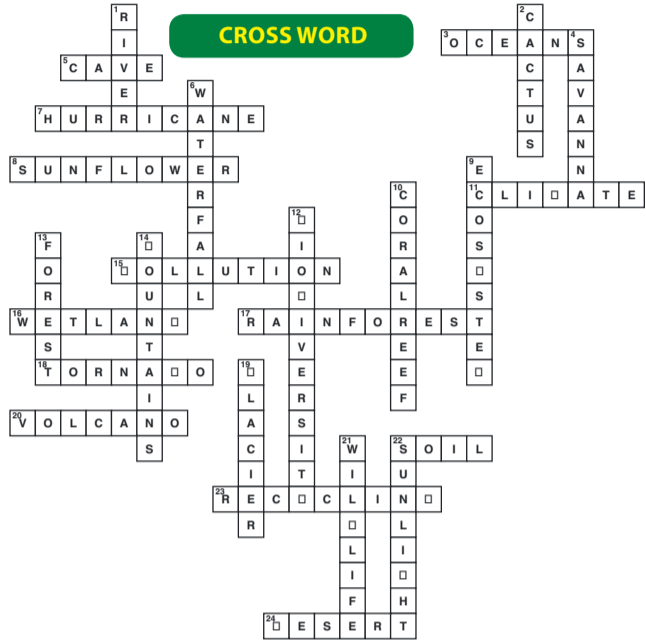
SCAN HERE TO DOWNLOAD PREVIOUS PUZZLES AND THE SOLUTIONS ONLINE



- 📺 Caxton Greater Joburg North
- 📺 Midrand Reporter
- 📺 @MidrandReporter
- 📺 @midrand\_reporter
- 📺 Caxton Joburg North

## Let's have fun with these puzzles...

### CROSS WORD



### Across

- [3] Large bodies of saltwater covering most of the Earth's surface.
- [5] A natural underground space large enough for a human to enter.
- [7] A large storm system with strong winds and heavy rain.
- [8] A tall, yellow-flowered plant known for its seeds and oil.
- [11] The weather conditions prevailing in an area over a long period.
- [15] The introduction of harmful substances into the environment.
- [16] Land consisting of marshes or swamps, often waterlogged.
- [17] A dense forest in tropical areas with a high amount of rainfall.
- [18] A violent rotating column of air extending from a thunderstorm to the ground.
- [20] A mountain or hill with a crater through which lava, ash, and gases are expelled.
- [22] The top layer of the earth's surface, consisting of rock and organic matter.
- [23] The process of converting waste materials into reusable materials.
- [24] A barren area of landscape where little precipitation occurs.

### Down

- [1] A large, flowing body of water that usually empties into an ocean or lake.
- [2] A type of plant adapted to survive in desert climates.
- [4] A grassy plain in tropical and subtropical regions, with few trees.
- [6] A steep fall of water from a height, often in a river or stream.
- [9] A community of interacting organisms and their physical environment.
- [10] A large underwater structure composed of coral and marine life.
- [12] The variety of life in the world or in a particular habitat.
- [13] A large area covered chiefly with trees and undergrowth.
- [14] Large land forms that rise significantly above the surrounding terrain.
- [19] A slow-moving mass or river of ice formed by compacted snow.
- [21] Animals living naturally in the wild without human intervention.
- [22] The light and warmth provided by the sun.

### WORD SEARCH



- SAVE SOIL
- CONSERVE
- HELP
- PLANET
- PRESERVE
- REUSE
- CLEAN
- PLASTIC
- OCEAN
- AIR
- LIFE
- RECYCLE
- EARTH
- WATER
- SKY
- GRASS
- TREES
- PLANTS
- REPURPOSE
- REDUCE
- TRASH
- COMPOST
- LAND

### RIDDLES

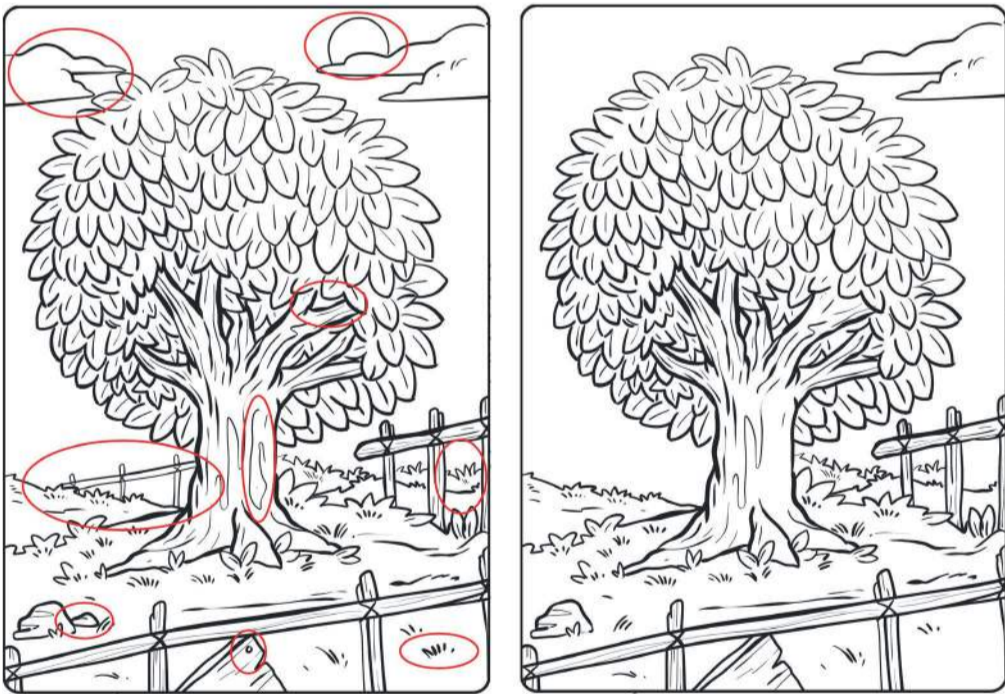
I build no house yet shelter all, I stand in silence, proud and tall. I drink the rain, I eat the sun, I give you air—your life's begun.

What am I? **A Tree.**

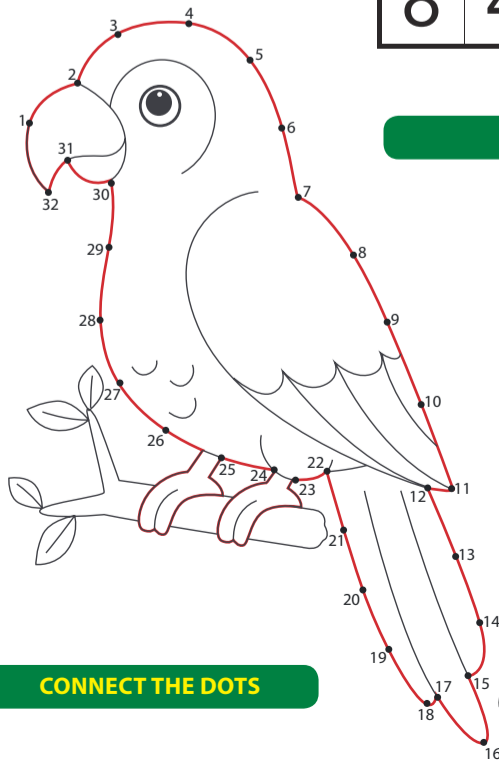
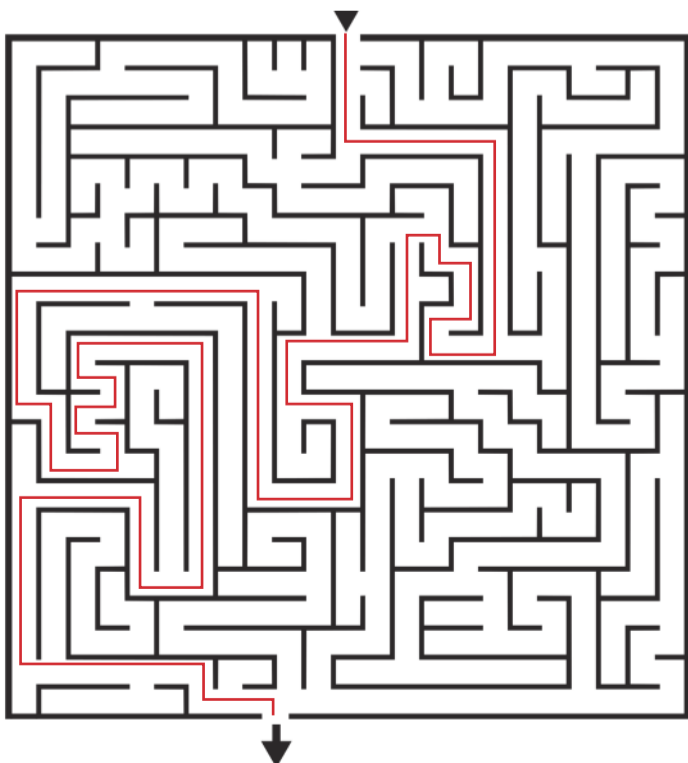
### SUDOKU

|   |   |   |   |   |   |   |   |   |
|---|---|---|---|---|---|---|---|---|
| 1 | 8 | 7 | 3 | 6 | 4 | 2 | 9 | 5 |
| 2 | 6 | 4 | 7 | 5 | 9 | 8 | 1 | 3 |
| 5 | 3 | 9 | 2 | 1 | 8 | 7 | 6 | 4 |
| 4 | 5 | 2 | 1 | 9 | 3 | 6 | 7 | 8 |
| 9 | 1 | 6 | 5 | 8 | 7 | 3 | 4 | 2 |
| 3 | 7 | 8 | 4 | 2 | 6 | 1 | 5 | 9 |
| 7 | 2 | 5 | 9 | 3 | 1 | 4 | 8 | 6 |
| 6 | 9 | 1 | 8 | 4 | 2 | 5 | 3 | 7 |
| 8 | 4 | 3 | 6 | 7 | 5 | 9 | 2 | 1 |

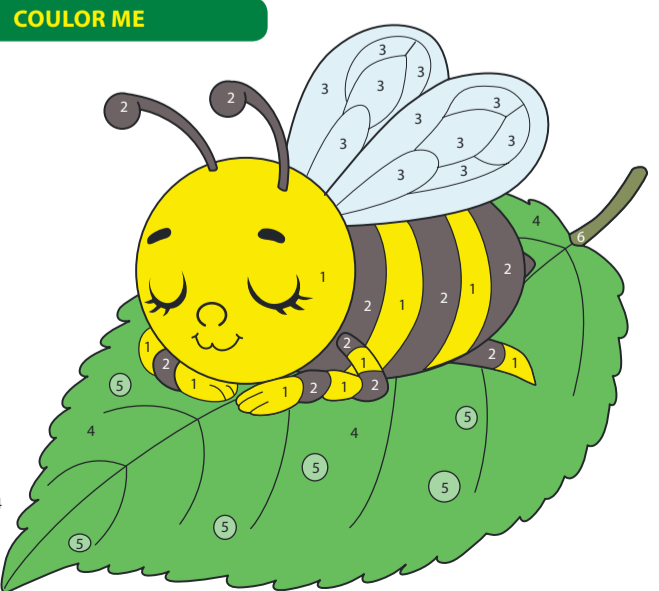
### SPOT THE 9 DIFFERENCES



### FIND THE WAY



### CONNECT THE DOTS



### COULOR ME