

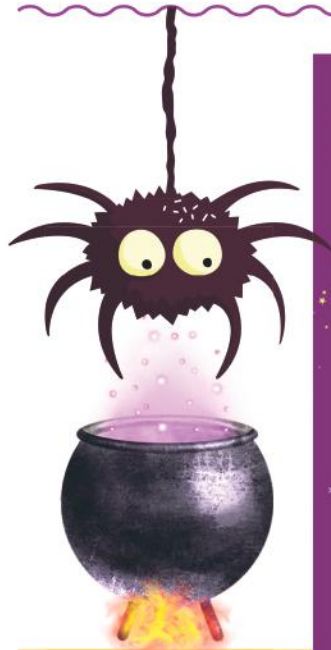
SCAN HERE TO
DOWNLOAD
PREVIOUS
PUZZLES AND THE
SOLUTIONS ONLINE



OUR **FAMILY** time
LET'S HAVE SOME FUN

076 483 4906

WANT TO BE FAMOUS? SUBMIT PHOTOS
OF YOU AND YOUR COMPLETED PAGE TO
OUR WHATSAPP LINE (CAXTON JOBURG
NORTH) AND YOU COULD BE FEATURED
ON OUR FAMILY TIME PAGE.



**HALLOWEEN
WORD SCRAMBLE**

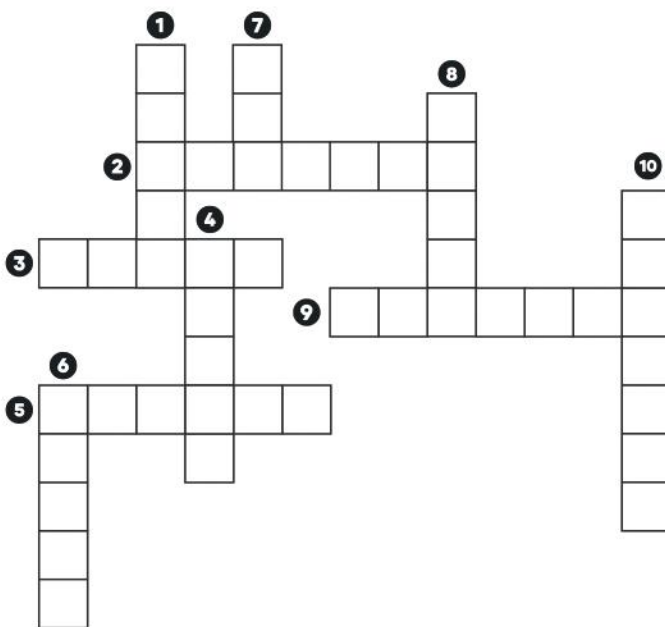
Unscramble the following Halloween words

WTHCI _____
SRPEID _____
CTA _____
BTA _____
CDRLAUON _____
TBMTTOSEN _____
GTHSO _____
MYMUM _____
CDYNA _____
SPRDEI BEW _____
PKUNMPI _____
TRKCI _____



**HALLOWEEN
CROSSWORD PUZZLE**

Read the clues and write the Halloween words



- 1 A spooky spirit of a person who has passed away. People say they come out on Halloween night!
- 2 The month in which Halloween is celebrated.
- 3 A magical and often spooky woman who can cast spells and ride on broomsticks.
- 4 Sweet treats that you get when you go trick-or-treating on Halloween, like lollipops and chocolate.
- 5 A little eight-legged creature with silk-making abilities
- 6 The bony part of your head that protects your brain. On Halloween, it's often used as a spooky symbol
- 7 A flying animal that comes out at night.
- 8 A magical flying tool that witches use to travel through the sky on Halloween night.
- 9 A big, round fruit that's often used for carving jack-o'-lanterns or making pumpkin pie.
- 10 A pumpkin that's been carved with a scary face and has a candle inside to make it glow.



Why didn't the skeleton cross the road?

Solve the addition problems. Use the answers to solve the riddle by writing the letters with their answers on the lines below.

A 276 + 81 = _____ **C** 297 + 34 = _____ **H** 81 + 55 = _____ **S** 199 + 177 = _____ **D** 104 + 217 = _____

N 275 + 294 = _____ **V** 57 + 42 = _____ **G** 66 + 37 = _____ **B** 371 + 278 = _____ **E** 87 + 56 = _____

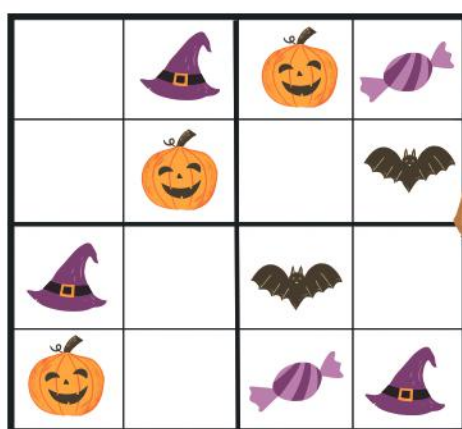
U 345 + 155 = _____ **T** 18 + 18 = _____ **I** 493 + 398 = _____



649 143 331 357 500 376 143 136 143 321 891 321 569 36
136 357 99 143 36 136 143 103 500 36 376

**HALLOWEEN
SUDOKU**

Complete the sudoku. You must only use each image once per row, column, and four-by-four grid.



Speaking in



1. Which part of a road do ghosts love to travel the most?
2. Why did the vampire eat a light bulb?