

Randburg
Sun

SCAN HERE TO
DOWNLOAD
PREVIOUS
PUZZLES AND THE
SOLUTIONS ONLINE

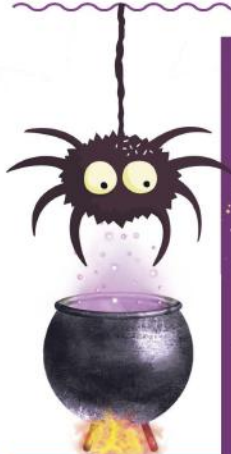


OUR FAMILY time

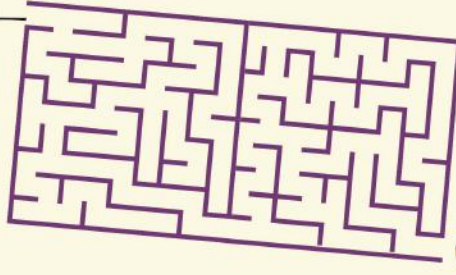
LET'S HAVE SOME FUN

076 483 4906

WANT TO BE FAMOUS? SUBMIT PHOTOS OF YOU AND YOUR COMPLETED PAGE TO OUR WHATSAPP LINE (CAXTON JOBURG NORTH) AND YOU COULD BE FEATURED ON OUR FAMILY TIME PAGE.



HELP THE WITCH FIND THE CANDY...



HALLOWEEN WORD SCRAMBLE

Unscramble the following Halloween words

WTHCI _____

SRPEID _____

CTA _____

BTA _____

CDRLAUN _____

TBMTTOSEN _____

GTHSO _____

MYMUM _____

CDYNA _____

SPRDEI BEW _____

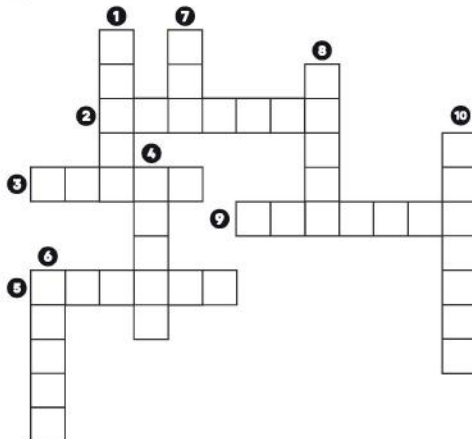
PKUNMPI _____

TRKCI _____



HALLOWEEN CROSSWORD PUZZLE

Read the clues and write the Halloween words



- A spooky spirit of a person who has passed away. People say they come out on Halloween night!
- The month in which Halloween is celebrated.
- A magical and often spooky woman who can cast spells and ride on broomsticks.
- Sweet treats that you get when you go trick-or-treating on Halloween, like lollipops and chocolate.
- A little eight-legged creature with silk-making abilities
- The bony part of your head that protects your brain. On Halloween, it's often used as a spooky symbol
- A flying animal that comes out at night.
- A magical flying tool that witches use to travel through the sky on Halloween night.
- A big, round fruit that's often used for carving jack-o'-lanterns or making pumpkin pie.
- A pumpkin that's been carved with a scary face and has a candle inside to make it glow.



Why didn't the skeleton cross the road?

Solve the addition problems. Use the answers to solve the riddle by writing the letters with their answers on the lines below.

A 276 + 81	C 297 + 34	H 81 + 55	S 199 + 177	D 104 + 217
----------------------	----------------------	---------------------	-----------------------	-----------------------

N 275 + 294	V 57 + 42	G 66 + 37	B 371 + 278	E 87 + 56
-----------------------	---------------------	---------------------	-----------------------	---------------------

U 345 + 155	T 18 + 18	I 493 + 398
-----------------------	---------------------	-----------------------



649 143 331 357 500 376 143 136 143 321 891 321 569 36

136 357 99 143 36 136 143 103 500 36 376

HALLOWEEN SUDOKU

Complete the sudoku. You must only use each image once per row, column, and four-by-four grid.



Speaking in



- Which part of a road do ghosts love to travel the most?
- Why did the vampire eat a light bulb?