

SCAN HERE TO
DOWNLOAD
PREVIOUS
PUZZLES AND THE
SOLUTIONS ONLINE

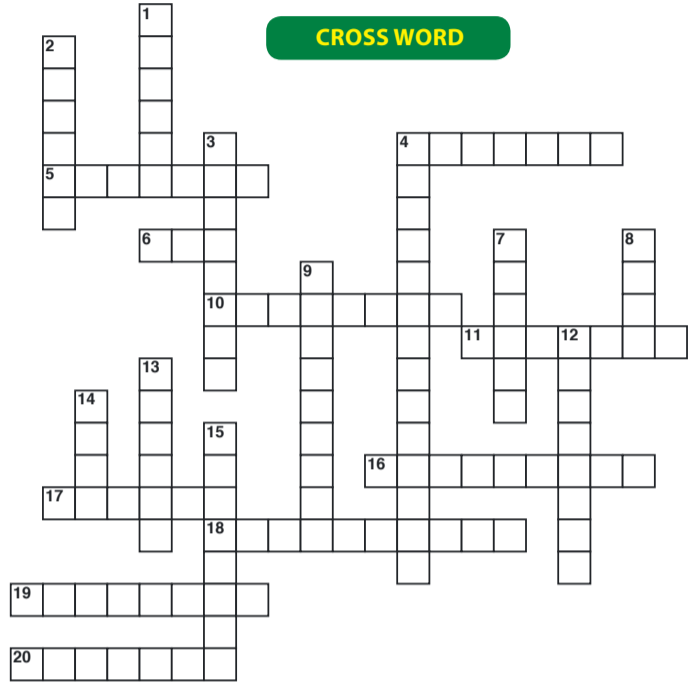


OUR **FAMILY** time
LET'S HAVE SOME FUN

- Caxton Greater Joburg North
- Rosebank Killarney Gazette
- RK_Gazette
- rosebank_killarney_gazette
- Caxton Joburg North

Family fun and games...

CROSS WORD



- Across**
- [4] A person who breeds animals
 - [5] The time when a female animal can produce babies when she mates
 - [6] Time of the year when male animals are sexually active
 - [10] To produce a lot of young animals
 - [11] The place where fish are bred
 - [16] A behavior that animals make to try to do to attract a mate
 - [17] Able to produce many young animals
 - [18] Put sperm in an animal to get them pregnant
 - [19] The place where male horses are kept to produce young horses
 - [20] An animal, that is able to produce young animals
- Down**
- [1] A female animal that is ready to breed with a male
 - [2] A time of the year when animals are sexually active
 - [3] To increase in number of animals
 - [4] The place where animals mate
 - [7] Sexual intercourse between animals
 - [8] A female and male animal who produce babies/breed
 - [9] The ancestors of an animal
 - [12] The place where chicken eggs or fish are hatched
 - [13] Keeping a male animal that can no longer breed
 - [14] To become the father of an animal
 - [15] The parents, grandparents, great grandparents, etc of an animal

RIDDLES

You might be called this animal if someone thinks that you're afraid. This is something that you might eat as well as its eggs that it laid.

What am I?



Did You Know...?

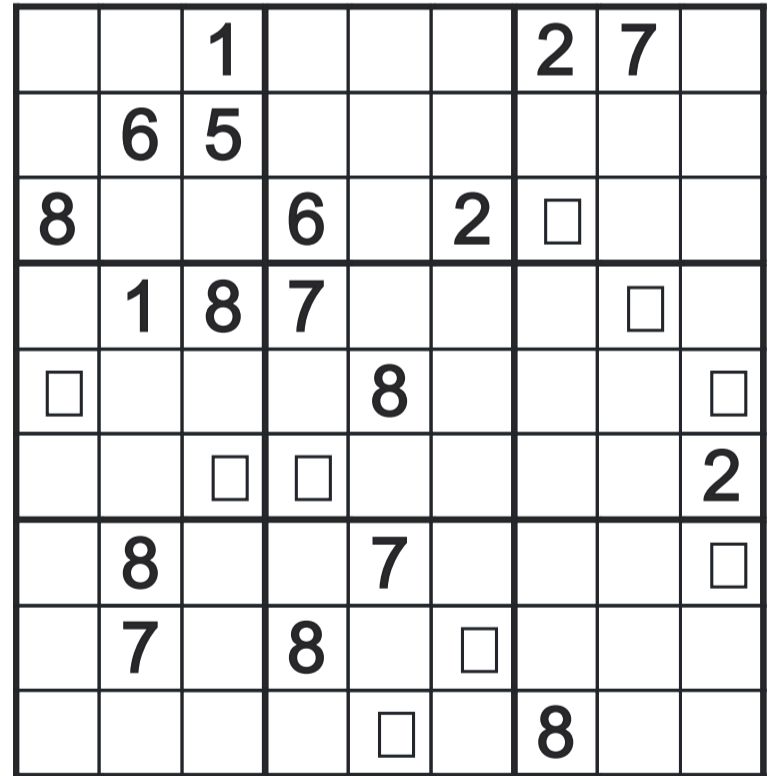
Horse can understand and interpret human emotion! A study by the Universities of Sussex and Portsmouth found that horses can read human facial expressions and remember a person's previous emotional state, adapting their behavior accordingly. This ability comes naturally to horses as they have complex facial expressions themselves. Another study detected an increase in heart rate when horses were looking at angry human faces versus happy ones. The study concluded that horses can accurately identify positive and negative human facial expressions and were more stressed when looking at angry faces.

WORD SEARCH

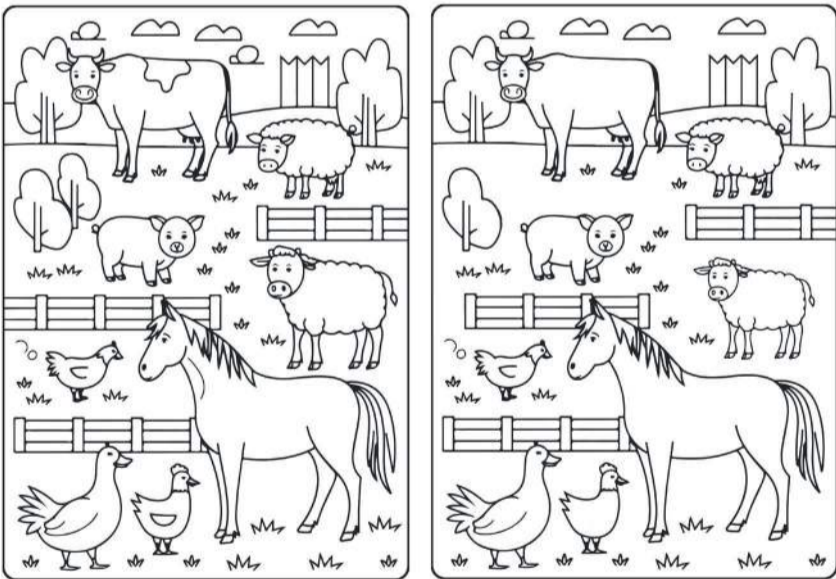


- BEES
- LAMB
- FOAL
- BISON
- ROOSTER
- CHICKEN
- DEER
- HORSE
- PIG
- DUCK
- DOG
- SHEEP
- COW
- LLAMA
- ANIMALS
- GEESE
- BIRDS
- GOAT
- BUFFALO
- FISH
- TURKEY
- GOOSE
- HEN
- BULL

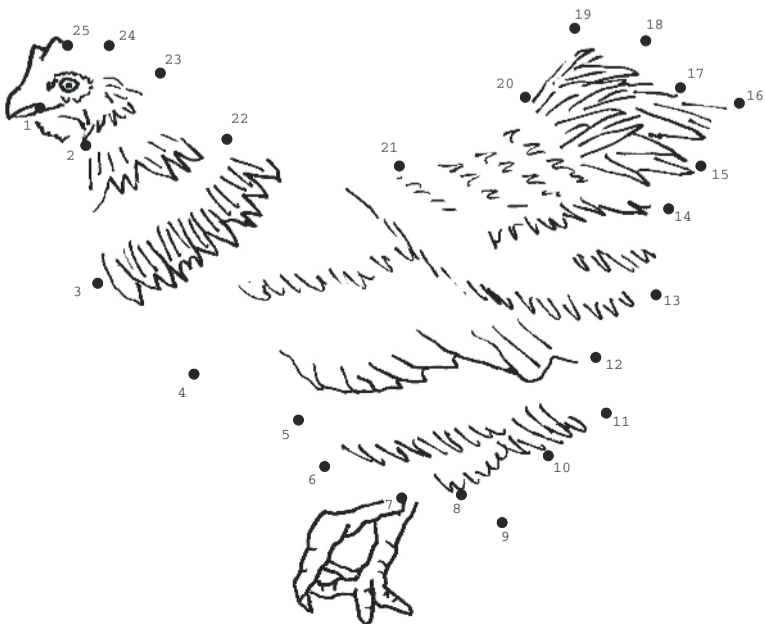
SUDOKU



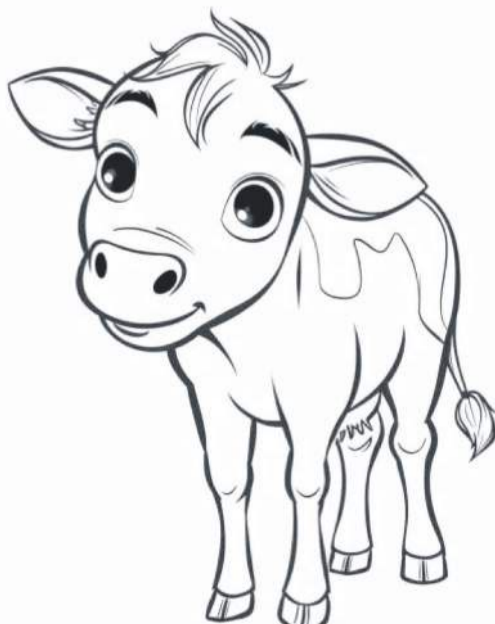
SPOT THE 10 DIFFERENCES



CONNET THE DOTS



COLOUR ME



FIND THE WAY

