

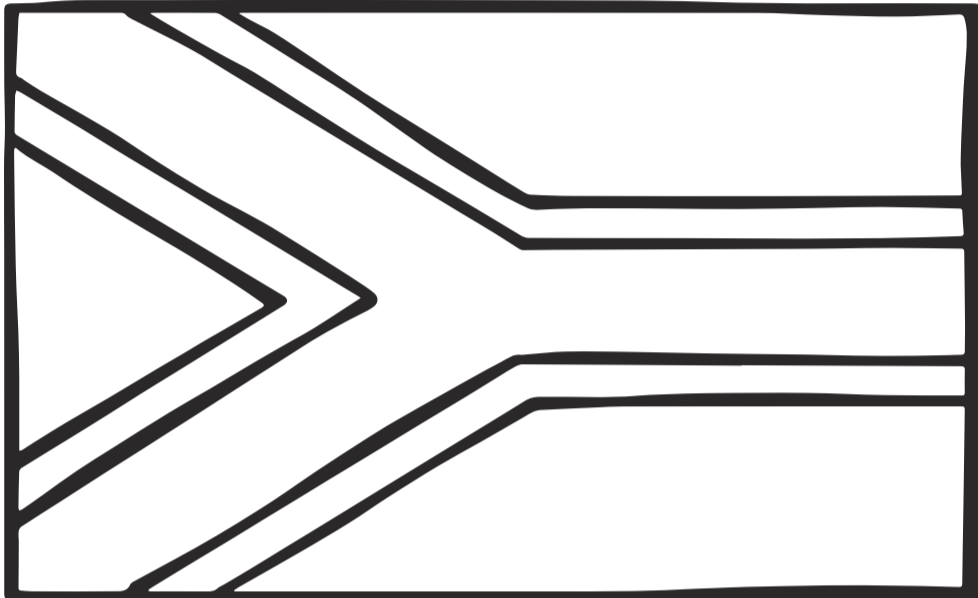
SCAN HERE TO
DOWNLOAD
PREVIOUS
PUZZLES AND THE
SOLUTIONS ONLINE



Unleash your wild side and be creative!

WANT TO BE FAMOUS? SUBMIT PHOTOS OF YOU AND YOUR COMPLETED PAGE TO OUR WHATSAPP LINE (CAXTON JOBURG NORTH) AND YOU COULD BE FEATURED ON OUR FAMILY TIME PAGE.

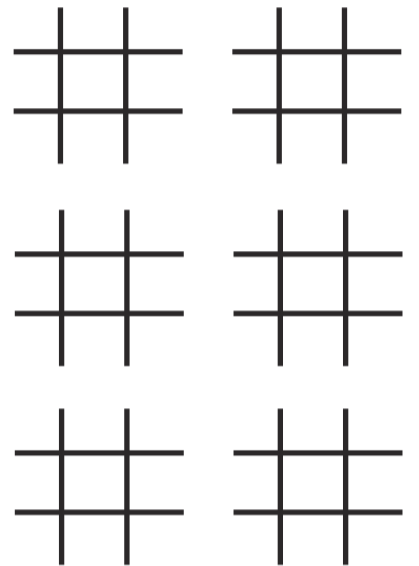
076 483 4906



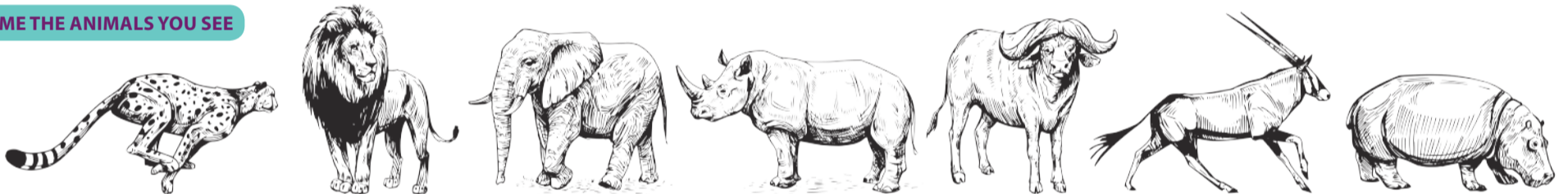
SOUTH AFRICA HAS 12 LANGUAGES, CAN YOU NAME ALL OF THEM

- 1.....
- 2.....
- 3.....
- 4.....
- 5.....
- 6.....
- 7.....
- 8.....
- 9.....
- 10.....
- 11.....
- 12.....

TIC-TAC-TOE



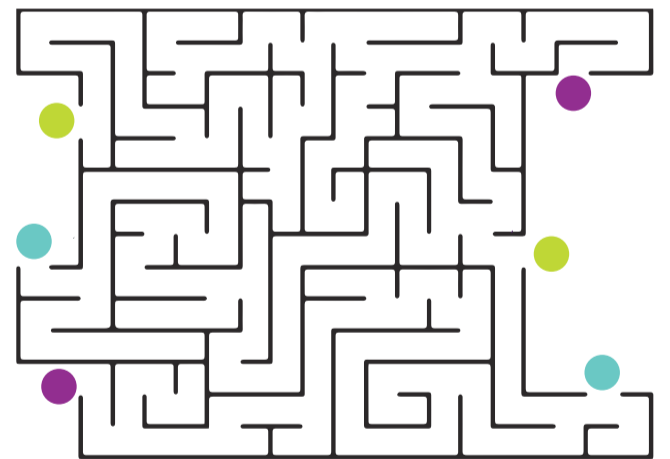
NAME THE ANIMALS YOU SEE



G N A O R E W O C H E E T A H
 F D N N T E E A F E N H A C N
 Y E G I B A T H N H E L D Y O
 A B O H P R H Y N L A H N E N
 H T H R H O Z I A M A L A K I
 G D A K T N A H P E L E P N H
 E E R K A R W Z E P P H F O P
 F F N A B N E I P R O L H M L
 O F P E P S G T L L O L R D O
 D A Z A R O E A T W H P H O D
 R R A E B P E I R O R N P S E
 L I R E B A M L I O N E O D F
 D G P B I E M W P L O Z R H P
 R O T T I G E R O H P R T T R
 L A E S O G O R I L L A D F R

- ELEPHANT
- DOLPHIN
- GIRAFFE
- ZEBRA
- LION
- WHALE
- MONKEY
- LEOPARD
- RHINO
- CHEETAH
- HIPPO
- OTTER
- BAT
- SEAL

Match the correct colour on the left to the colour on the right by solving the maze.



Same or different? Circle the odd one out.

